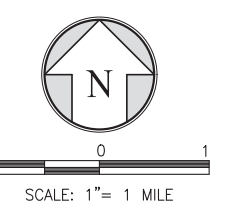


PROCEEDING 1821
PROPOSED

NOTE
SEE INDIVIDUAL SHEETS FOR FOLLOWING INFORMATION: COURSE NUMBERS, LINE TABLES, CURVE TABLES, RADIAL TABLES AND ASSESSOR PARCEL NUMBERS.
ALL BEARINGS & DISTANCES COMPILED FROM RECORD.

LEGEND
 - - - - - PROPOSED LOST HILLS CONSOLIDATED SERVICE DISTRICT FORMATION (220.334+- ACRES)
 - - - - - SECTION
 - - - - - TOWNSHIP/RANGE
 - - - - - MATCHLINE

CHECKED BY
KERN COUNTY SURVEYOR'S OFFICE
2024-02-27
Approved by: *[Signature]*



Disclaimer: For assessment purposes only. This description of land is not a legal property description as defined in the Subdivision Map Act and may not be used as the basis for an offer for sale of the land described.

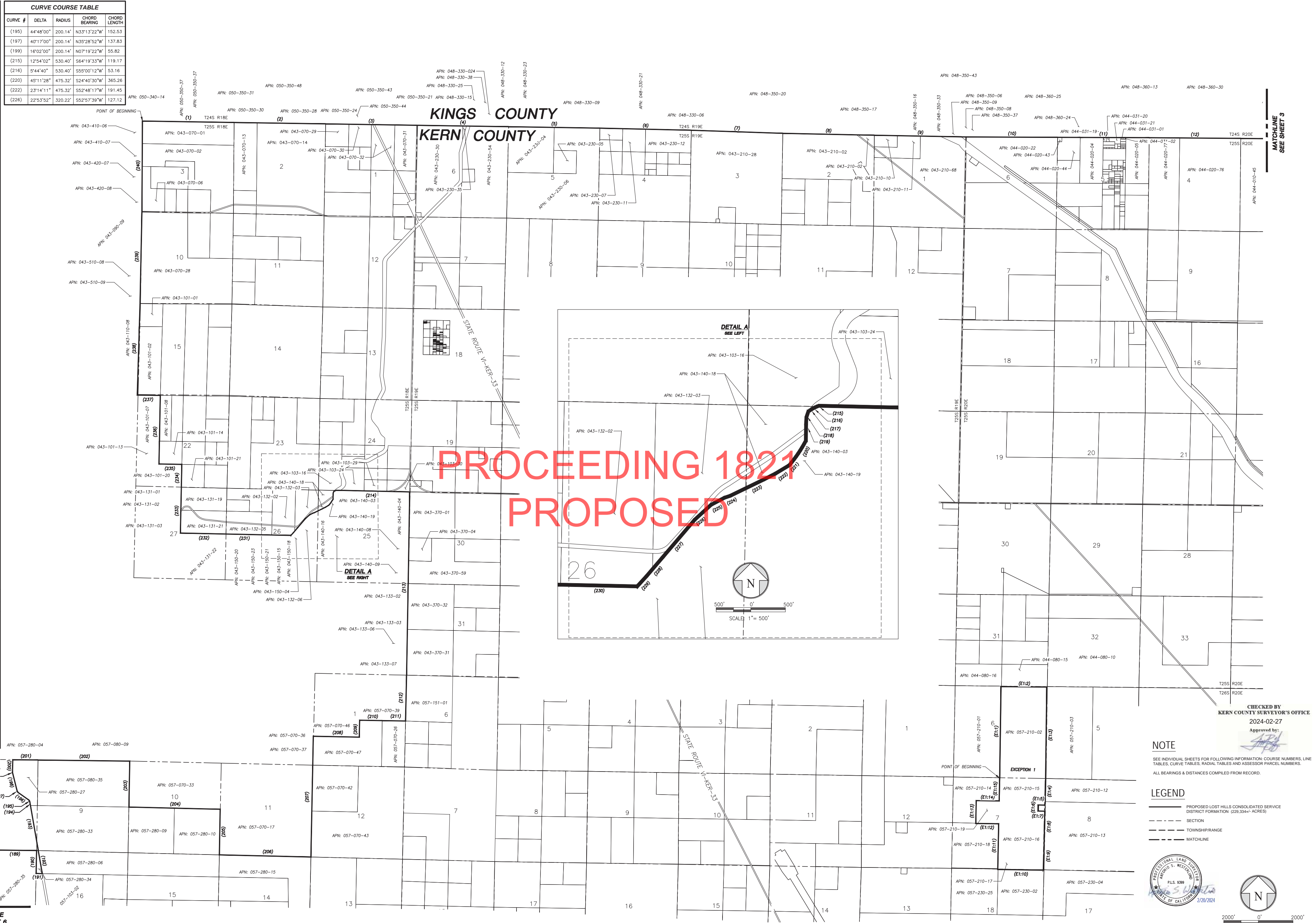
PROJECT NO.: 190115
DRAWN BY: M/WN
DATE: 01/24
SCALE: AS SHOWN
SHEET NO.: 1 of 6

EXHIBIT "B"
LOST HILLS COMMUNITY SERVICES DISTRICT
FORMATION - ANNEXATION NO. 00 - OVERVIEW



LINE COURSE TABLE			CURVE COURSE TABLE				
LINE #	BEARING	DISTANCE	CURVE #	DELTA	RADIUS	CHORD BEARING	CHORD LENGTH
(1)	S89°06'19"E	5294.72	(195)	44°48'00"	200.14'	N33°13'22"W	152.53
(2)	S89°07'11"E	5290.11	(197)	40°17'00"	200.14'	N35°28'52"W	137.83
(3)	S89°07'00"E	5289.46	(199)	16°02'00"	200.14'	N07°19'22"W	55.82
(4)	S89°06'49"E	5281.03	(215)	12°54'02"	530.40'	S64°19'33"W	119.17
(5)	S89°05'44"E	5276.60	(216)	5°44'40"	530.40'	S55°00'12"W	53.16
(6)	S88°41'17"E	5282.08	(220)	45°11'28"	475.32'	S24°40'30"W	365.26
(7)	S88°04'00"E	5290.18	(222)	23°14'11"	475.32'	S52°48'17"W	191.45
(8)	S88°48'54"E	5288.59	(226)	22°53'52"	320.22'	S52°57'39"W	127.12
(9)	S88°56'00"E	5331.72					
(10)	S89°44'42"E	5260.06					
(11)	S89°47'25"E	5289.99					
(12)	S89°32'30"E	5290.36					
(13)	S89°22'52"E	5290.39					
(188)	N00°14'27"E	3955.66					
(189)	N89°37'52"E	2646.94					
(190)	S00°14'58"W	1326.82					
(191)	S89°37'37"E	376.64					
(192)	N10°49'04"W	1352.53					
(193)	N10°49'08"W	2663.02					
(194)	N10°49'22"W	173.84					
(196)	N55°37'22"W	733.72					
(198)	N15°20'22"W	1050.19					
(200)	N00°41'38"E	718.84					
(201)	N89°41'50"E	1451.25					
(202)	N89°42'47"E	5304.65					
(203)	S00°05'25"W	2648.23					
(204)	S89°42'04"E	5287.55					
(205)	S00°12'13"W	2651.00					
(206)	S89°39'45"E	5294.19					
(207)	N00°18'44"E	6982.25					
(208)	S89°51'08"E	2636.15					
(209)	N00°20'14"E	984.02					
(210)	N89°58'37"E	1325.90					
(211)	S89°54'33"E	1325.17					
(212)	N00°20'13"E	2651.26					
(213)	N00°08'52"E	10567.18					
(214)	N89°51'08"W	4025.68					
(217)	S52°07'52"W	114.34					
(218)	S22°23'47"W	121.05					
(219)	S00°40'09"W	168.19					
(221)	S41°11'12"W	269.04					
(223)	S61°12'16"W	559.07					
(224)	S64°07'57"W	66.71					
(225)	S64°07'57"W	381.59					
(227)	S40°25'47"W	709.44					
(228)	S40°25'47"W	350.30					
(229)	S42°22'48"W	200.84					
(230)	N89°33'39"W	1322.42					
(231)	N89°51'08"W	2636.85					
(232)	N89°51'08"W	2646.74					
(233)	N00°15'17"E	2646.74					
(234)	N00°15'17"E	1315.94					
(235)	N89°51'08"W	1315.95					
(236)	N00°15'17"E	3970.10					
(237)	S89°49'39"W	1325.88					
(238)	N00°08'52"E	5283.59					
(239)	N00°08'52"E	5283.59					
(240)	N00°32'06"W	5240.72					
(E1:1)	N00°48'40"E	5287.50					
(E1:2)	S89°27'07"E	2645.88					
(E1:3)	S00°45'03"W	5302.62					
(E1:4)	S01°18'39"W	1525.00					
(E1:5)	N88°41'21"W	380.00					
(E1:6)	S01°18'39"W	350.00					
(E1:7)	S88°41'21"E	380.00					
(E1:8)	S01°18'39"W	764.32					
(E1:9)	S01°17'09"W	2638.72					
(E1:10)	N89°05'46"W	2645.67					
(E1:11)	N01°13'19"E	2637.79					
(E1:12)	N89°06'58"W	1324.83					
(E1:13)	N01°11'19"E	1318.80					
(E1:14)	S89°07'41"E	1325.59					
(E1:15)	N01°13'19"E	1319.08					

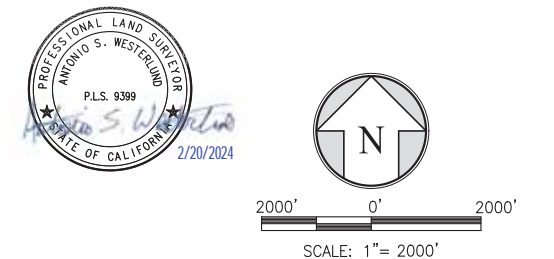
EXCEPTION 1	
(E1:1)	N00°48'40"E 5287.50
(E1:2)	S89°27'07"E 2645.88
(E1:3)	S00°45'03"W 5302.62
(E1:4)	S01°18'39"W 1525.00
(E1:5)	N88°41'21"W 380.00
(E1:6)	S01°18'39"W 350.00
(E1:7)	S88°41'21"E 380.00
(E1:8)	S01°18'39"W 764.32
(E1:9)	S01°17'09"W 2638.72
(E1:10)	N89°05'46"W 2645.67
(E1:11)	N01°13'19"E 2637.79
(E1:12)	N89°06'58"W 1324.83
(E1:13)	N01°11'19"E 1318.80
(E1:14)	S89°07'41"E 1325.59
(E1:15)	N01°13'19"E 1319.08



CHECKED BY
KERN COUNTY SURVEYOR'S OFFICE
2024-02-27
Approved by: *[Signature]*

NOTE
SEE INDIVIDUAL SHEETS FOR FOLLOWING INFORMATION: COURSE NUMBERS, LINE TABLES, CURVE TABLES, RADIAL TABLES AND ASSESSOR PARCEL NUMBERS.
ALL BEARINGS & DISTANCES COMPILED FROM RECORD.

LEGEND
 - - - - - PROPOSED LOST HILLS CONSOLIDATED SERVICE DISTRICT FORMATION (229.3347 ACRES)
 - - - - - SECTION
 - - - - - TOWNSHIP/RANGE
 - - - - - MATCHLINE

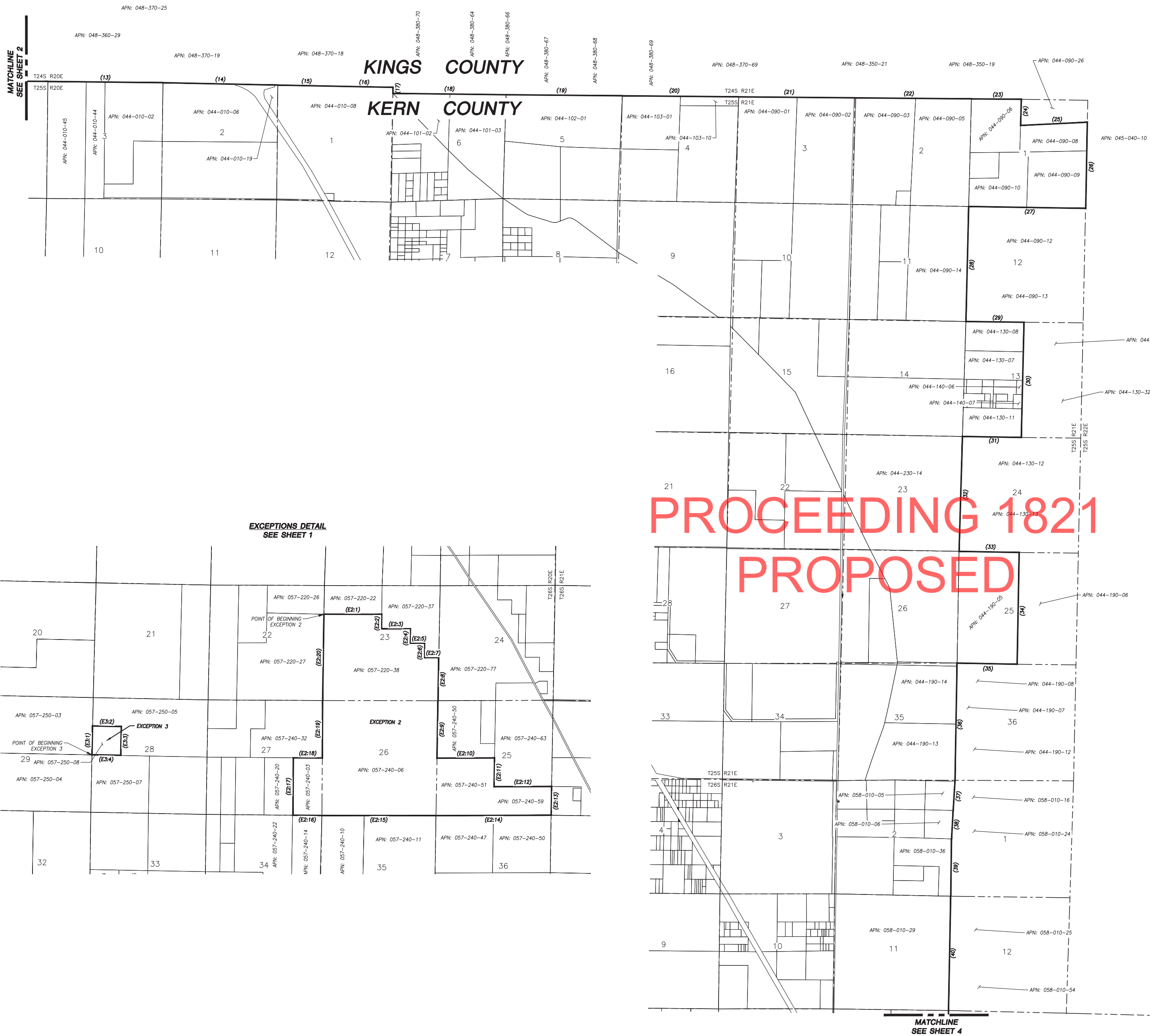


Disclaimer: For assessment purposes only. This description of land is not a legal property description as defined in the Subdivision Map Act and may not be used as the basis for an offer for sale of the land described.

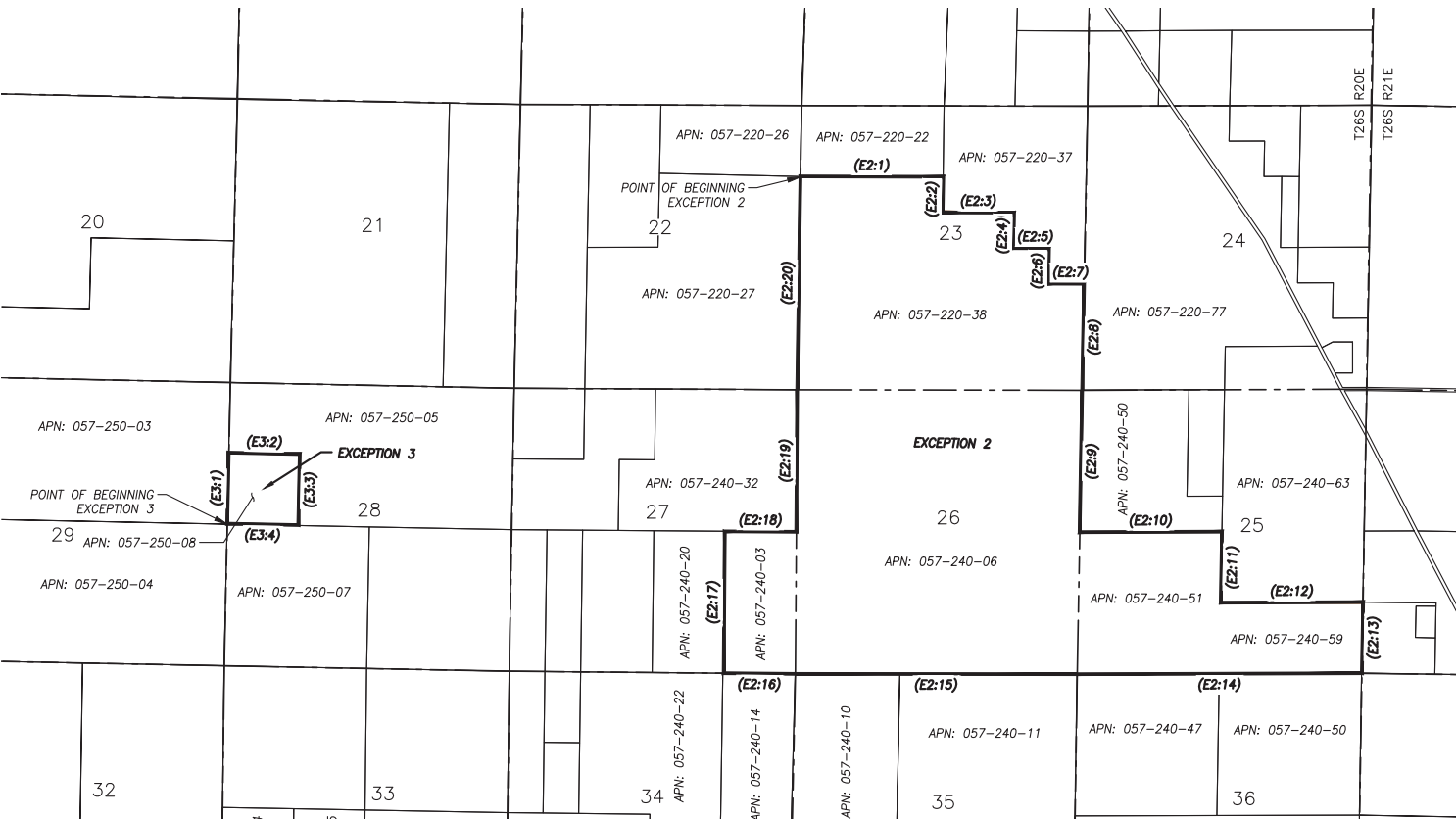
PROJECT NO.: 190115
DRAWN BY: AM
CHECKED BY: PM
SCALE: AS SHOWN
SHEET NO.: 2 of 6

EXHIBIT "B"
LOST HILLS COMMUNITY SERVICES DISTRICT
FORMATION - ANNEXATION NO. 00





EXCEPTIONS DETAIL
SEE SHEET 1

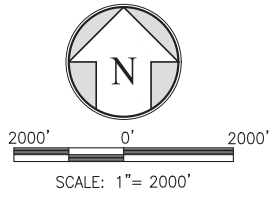


LINE COURSE TABLE		
LINE #	BEARING	DISTANCE
(14)	S88°48'12"E	5280.70
(15)	S88°52'34"E	2646.48
(16)	S88°51'44"E	2648.10
(17)	S00°45'40"W	276.54
(18)	S89°18'15"E	5204.35
(19)	S89°05'35"E	5099.23
(20)	S89°17'46"E	5274.96
(21)	S89°17'46"E	5274.96
(22)	S89°17'46"E	5274.96
(23)	S89°17'27"E	2441.26
(24)	S01°27'09"W	997.47
(25)	S88°51'36"E	3048.05
(26)	S01°15'31"W	4002.22
(27)	N88°28'31"W	5378.84
(28)	S01°35'14"W	5290.29
(29)	S88°49'30"E	2703.84
(30)	S01°36'03"W	5288.65
(31)	N88°46'42"W	2732.89
(32)	S01°52'59"W	5285.00
(33)	S88°43'17"E	2762.98
(34)	S01°14'23"W	5286.42
(35)	N88°38'23"W	2760.02
(36)	S01°12'26"W	5287.49
(37)	S06°04'43"W	1306.96
(38)	S01°19'48"W	1318.72
(39)	S00°56'49"W	2633.76
(40)	S01°06'12"W	5255.26
(41)	S01°08'51"W	5271.40
EXCEPTION 2		
(E2-1)	S89°51'27"E	2657.62
(E2-2)	S00°58'02"W	661.07
(E2-3)	S89°51'14"E	1327.53
(E2-4)	S01°02'20"W	661.01
(E2-5)	S89°51'26"E	663.35
(E2-6)	S01°01'01"W	660.18
(E2-7)	S89°52'05"E	663.16
(E2-8)	S01°02'01"W	1980.18
(E2-9)	S01°01'13"W	2643.36
(E2-10)	N89°46'49"E	2649.02
(E2-11)	S01°00'30"W	1321.87
(E2-12)	N89°47'05"E	2649.30
(E2-13)	S00°59'46"W	1322.06
(E2-14)	S89°47'20"W	5299.14
(E2-15)	N89°55'10"W	5243.85
(E2-16)	N89°28'31"W	1330.47
(E2-17)	N00°27'40"E	2638.96
(E2-18)	S89°41'16"E	1327.82
(E2-19)	N00°24'13"E	2643.89
(E2-20)	N00°51'43"E	3966.29
EXCEPTION 3		
(E3-1)	N01°12'00"E	1322.24
(E3-2)	S88°51'27"E	1322.76
(E3-3)	S01°11'49"W	1321.88
(E3-4)	N88°52'22"W	1322.83

NOTE
SEE INDIVIDUAL SHEETS FOR FOLLOWING INFORMATION: COURSE NUMBERS, LINE TABLES, CURVE TABLES, RADIAL TABLES AND ASSESSOR PARCEL NUMBERS.
ALL BEARINGS & DISTANCES COMPILED FROM RECORD.

LEGEND
 - - - - - PROPOSED LOST HILLS CONSOLIDATED SERVICE DISTRICT FORMATION (229.3341+ ACRES)
 - - - - - SECTION
 - - - - - TOWNSHIP/RANGE
 - - - - - MATCHLINE

CHECKED BY
KERN COUNTY SURVEYOR'S OFFICE
2024-02-27
Approved by: *[Signature]*

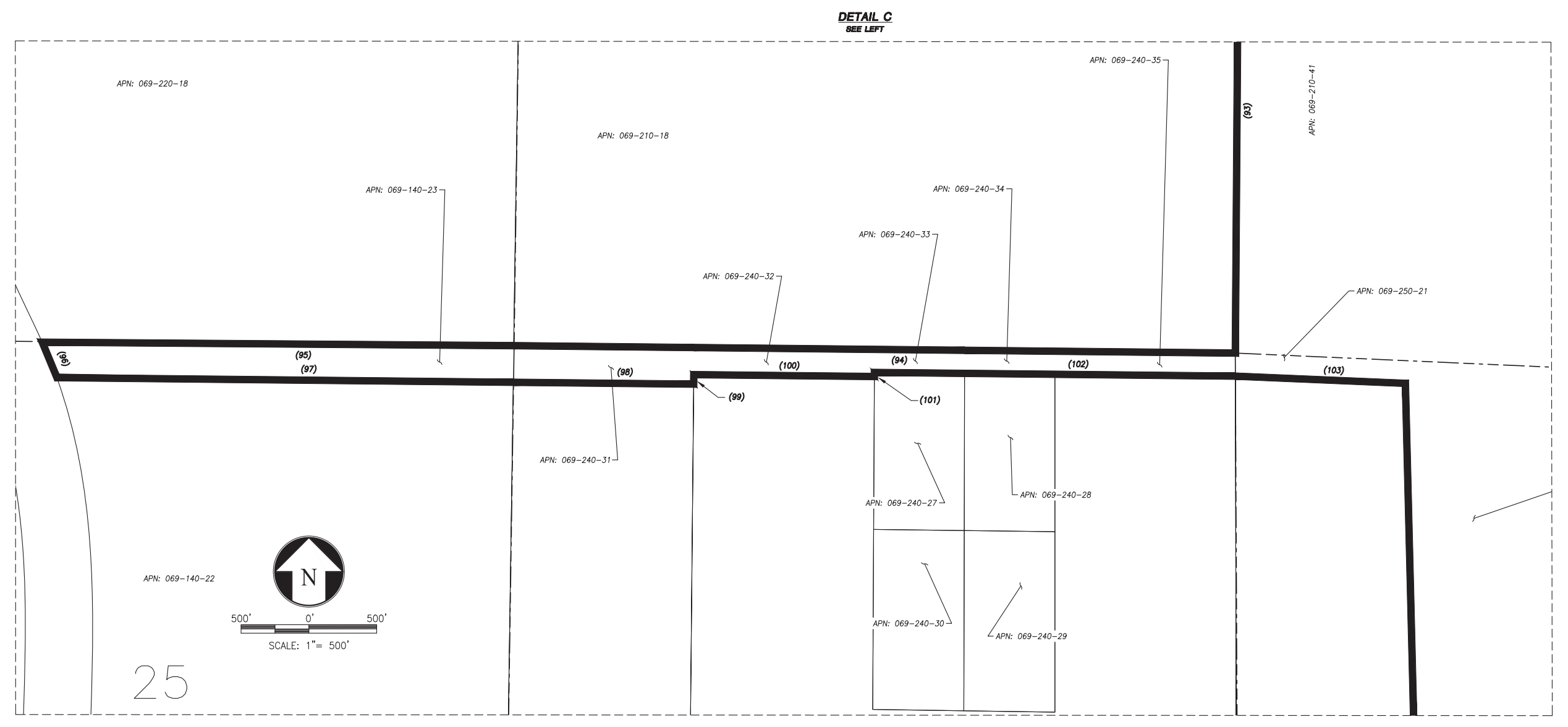
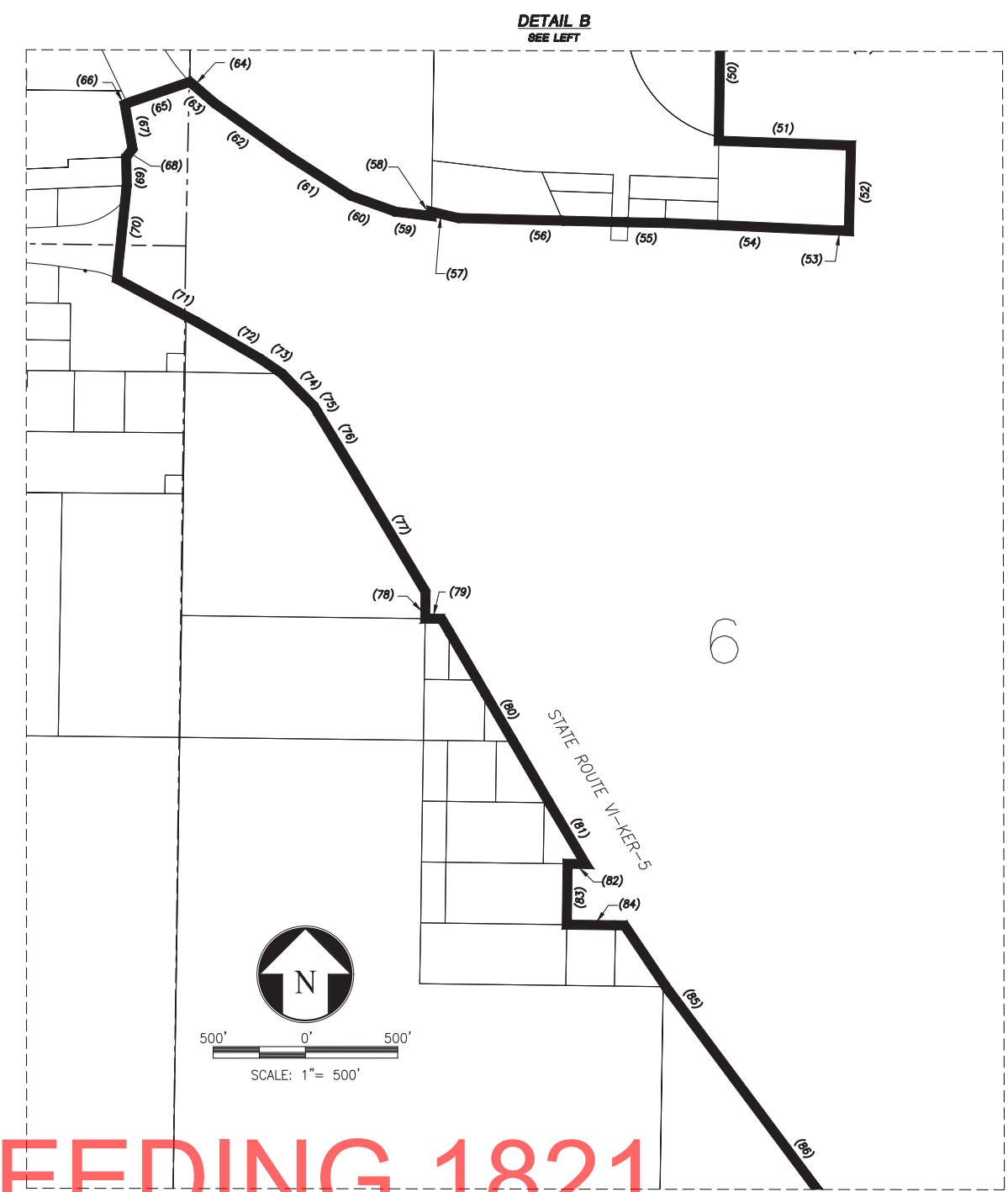
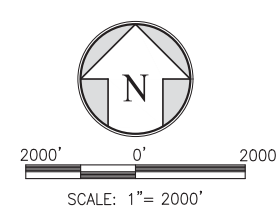
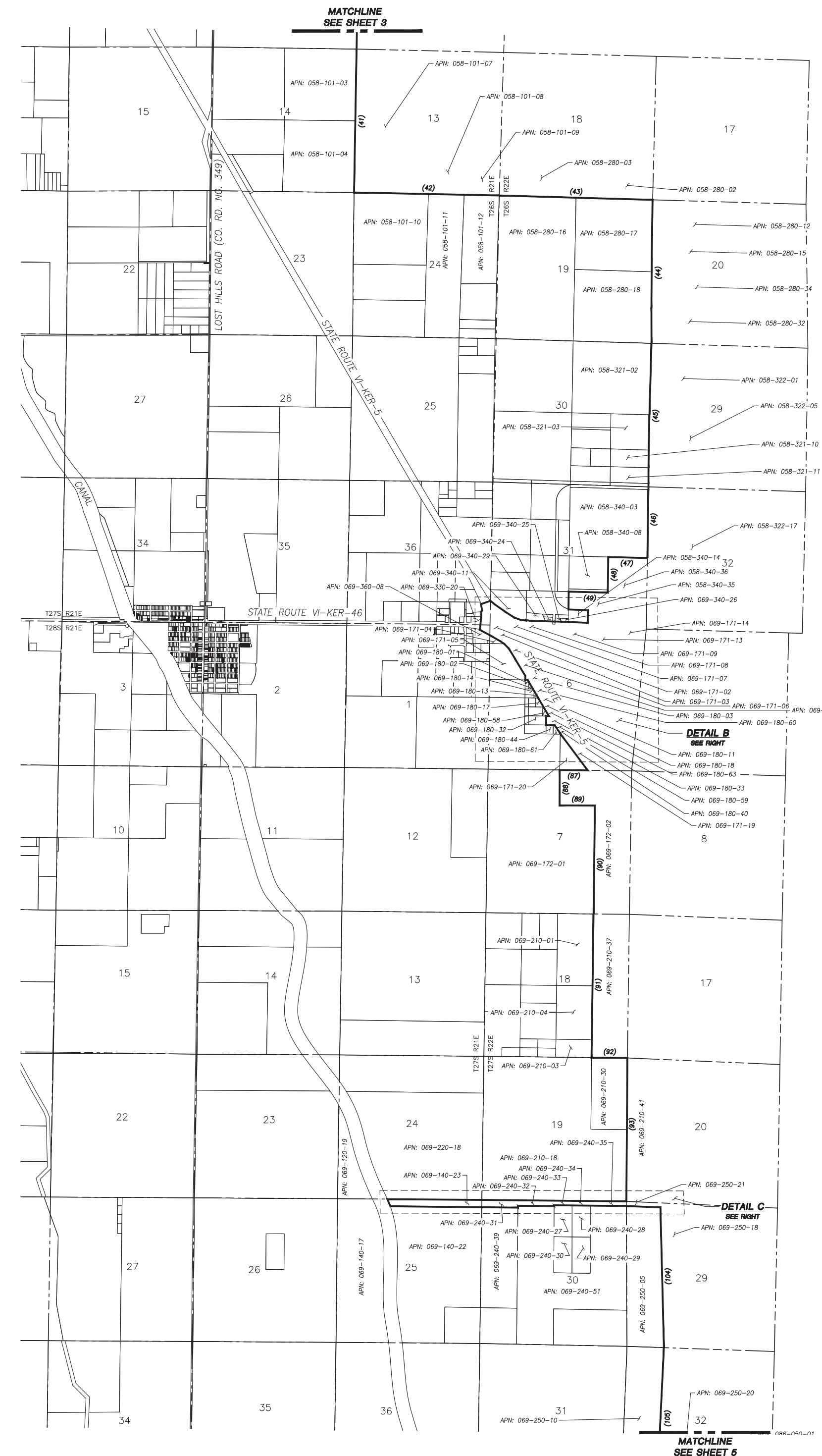


Disclaimer: For assessment purposes only. This description of land is not a legal property description as defined in the Subdivision Map Act and may not be used as the basis for an offer for sale of the land described.

PROJECT NO.: 190115
DRAWN BY: AM
DATE: 01/19/24
SCALE: AS SHOWN
SHEET NO.: 3 of 6

EXHIBIT "B"
LOST HILLS COMMUNITY SERVICES DISTRICT
FORMATION - ANNEXATION NO. 00





NOTE

SEE INDIVIDUAL SHEETS FOR FOLLOWING INFORMATION: COURSE NUMBERS, LINE TABLES, CURVE TABLES, RADIAL TABLES AND ASSESSOR PARCEL NUMBERS.
ALL BEARINGS & DISTANCES COMPILED FROM RECORD.

LEGEND

- PROPOSED LOST HILLS CONSOLIDATED SERVICE DISTRICT FORMATION (229.334+/- ACRES)
- - - SECTION
- - - TOWNSHIP/RANGE
- - - MATCHLINE



CHECKED BY
KERN COUNTY SURVEYOR'S OFFICE
2/27/24

Approved by:
[Signature]

LINE #	BEARING	DISTANCE
(41)	S01°08'51"W	5271.40
(42)	S88°42'48"E	5340.81
(43)	S88°16'09"E	5649.38
(44)	S00°32'16"W	5280.13
(45)	S01°18'48"W	5281.14
(46)	S00°59'37"W	2573.41
(47)	N88°49'25"W	1438.38
(48)	S00°56'49"W	1305.20
(49)	N89°33'38"W	1437.63
(50)	S00°54'45"W	681.85
(51)	S88°58'49"E	718.59
(52)	S00°55'48"W	487.99
(53)	N83°27'22"W	75.72
(54)	N87°30'19"W	901.01
(55)	N88°52'53"W	225.01
(56)	N88°29'50"W	924.62
(57)	N76°26'37"W	149.52
(58)	S01°05'39"W	14.13
(59)	N83°14'08"W	196.22
(61)	N57°13'53"W	401.70
(62)	N54°36'51"W	491.42
(64)	N45°13'39"W	43.68
(65)	S71°13'14"W	358.36
(66)	S64°36'40"W	14.92
(67)	S09°54'51"E	245.15
(68)	S37°55'18"W	56.14
(69)	S01°04'50"E	206.34
(70)	S06°57'32"W	463.15
(71)	S62°05'56"E	501.25
(72)	S60°14'15"E	397.14

LINE #	BEARING	DISTANCE
(73)	S55°56'40"E	141.33
(74)	S44°53'15"E	246.96
(75)	S30°20'08"E	35.08
(76)	S30°44'26"E	399.70
(77)	S30°11'32"E	738.07
(78)	S01°00'56"W	147.86
(79)	S89°11'42"E	89.37
(80)	S30°11'32"E	1235.14
(81)	S30°48'54"E	307.16
(82)	N89°10'55"W	98.70
(83)	S00°59'19"W	330.08
(84)	S89°10'16"E	314.52
(86)	S37°01'32"E	1108.23
(87)	S89°56'28"W	1046.81
(88)	S00°04'28"W	1320.00
(89)	N89°56'28"E	1320.00
(90)	S00°04'28"W	3960.00
(91)	S00°03'34"W	5281.02
(92)	N89°56'34"E	1320.00
(93)	S00°23'26"E	5111.03
(94)	S89°36'34"W	5321.28
(95)	S89°26'47"W	3475.86
(96)	S23°32'38"E	282.89
(97)	N89°36'34"E	3364.61
(98)	N89°36'34"E	1330.49
(99)	N00°23'26"W	70.00
(100)	N89°36'34"E	1331.24
(101)	N00°23'26"W	30.00
(102)	N89°36'34"E	2659.55
(103)	S88°12'05"E	1319.00

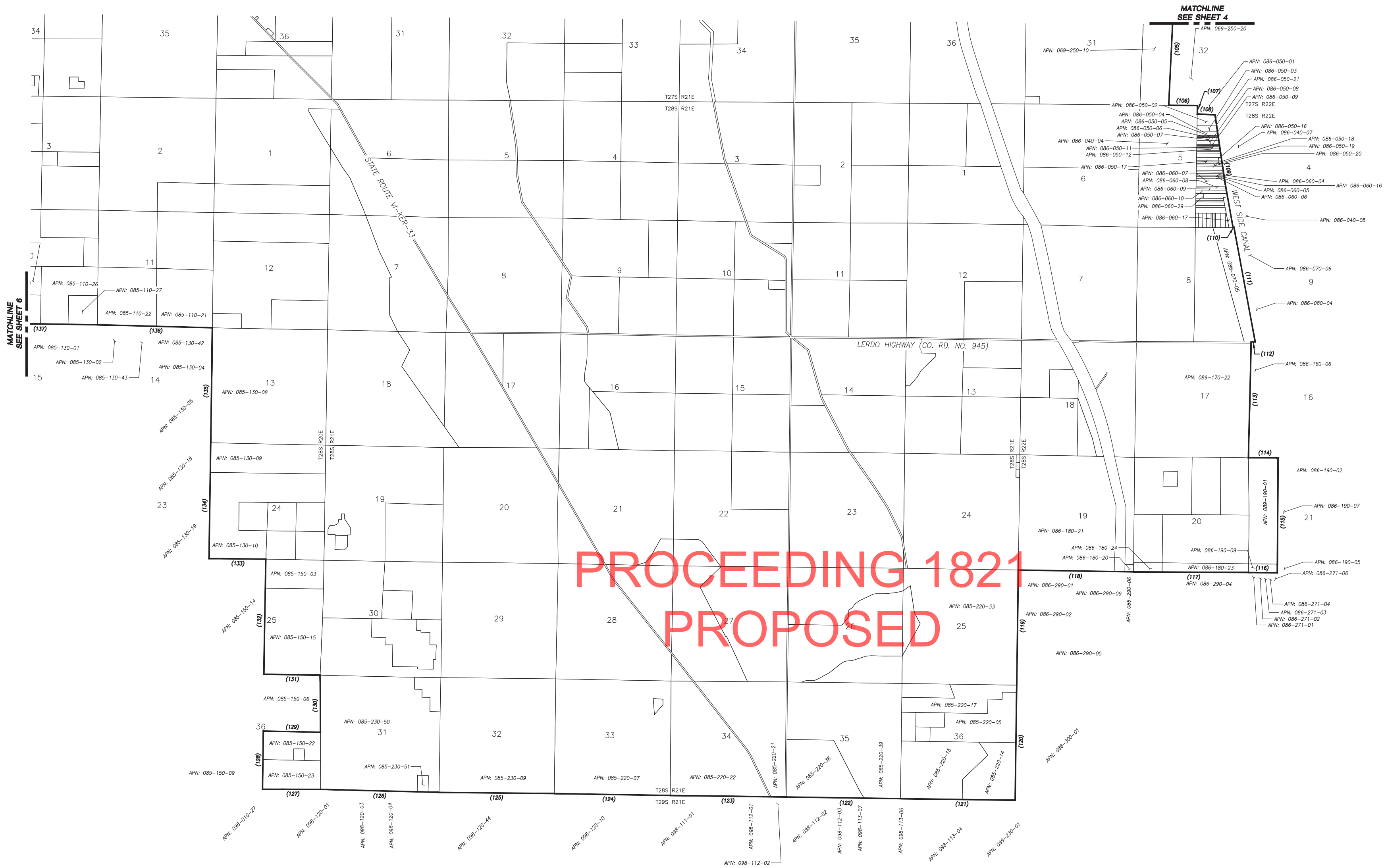
LINE #	BEARING	DISTANCE
(104)	S00°01'43"W	5289.35
(105)	S00°30'24"W	5262.44

CURVE #	DELTA	RADIUS	CHORD BEARING	CHORD LENGTH
(60)	25°41'43"	584.23'	N70°14'00"W	259.82
(63)	7°01'27"	1068.75'	N50°29'42"W	130.94
(85)	3°59'26"	14130.00'	S35°01'49"E	983.94

**PROCEEDING 1821
PROPOSED**

Disclaimer: For assessment purposes only. This description of land is not a legal property description as defined in the Subdivision Map Act and may not be used as the basis for an offer for sale of the land described.





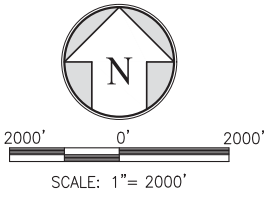
LINE COURSE TABLE		
LINE #	BEARING	DISTANCE
(105)	S00°30'24"W	5262.44
(106)	S88°38'55"E	1239.50
(107)	S01°10'35"E	319.24
(108)	S87°59'16"E	817.98
(109)	S09°49'31"E	5242.57
(110)	N89°27'32"E	77.12
(111)	S11°36'23"E	5386.00
(112)	S89°23'32"W	264.77
(113)	S00°29'15"W	5279.33
(114)	S89°58'08"E	1353.31
(115)	S00°20'11"W	5291.92
(116)	N89°32'15"W	1353.11
(117)	N89°52'38"W	5279.22
(118)	N89°19'06"W	5287.85
(119)	S00°32'48"W	5284.49
(120)	S00°32'12"W	5279.04
(121)	N89°28'56"W	5269.23
(122)	N89°26'11"W	5268.72
(123)	N89°49'41"W	5304.55
(124)	N89°18'26"W	5325.99
(125)	N89°38'56"W	5291.22
(126)	N89°38'56"W	5439.10
(127)	N89°05'34"W	2659.47
(128)	N00°47'24"E	2646.42
(129)	S88°56'00"E	2654.28
(130)	N00°29'54"E	2639.12
(131)	N88°55'05"W	2668.41
(132)	N01°23'19"E	5280.00
(133)	N88°55'11"W	2640.00
(134)	N01°23'19"E	5280.00
(135)	N01°23'19"E	5298.06
(136)	N88°35'26"W	5267.46
(137)	N88°35'26"W	5276.04

PROCEEDING 1821
PROPOSED

NOTE
SEE INDIVIDUAL SHEETS FOR FOLLOWING INFORMATION: COURSE NUMBERS, LINE TABLES, CURVE TABLES, RADIAL TABLES AND ASSESSOR PARCEL NUMBERS.
ALL BEARINGS & DISTANCES COMPILED FROM RECORD.

LEGEND

CHECKED BY
KERN COUNTY SURVEYOR'S OFFICE
2024-02-27
Approved by:



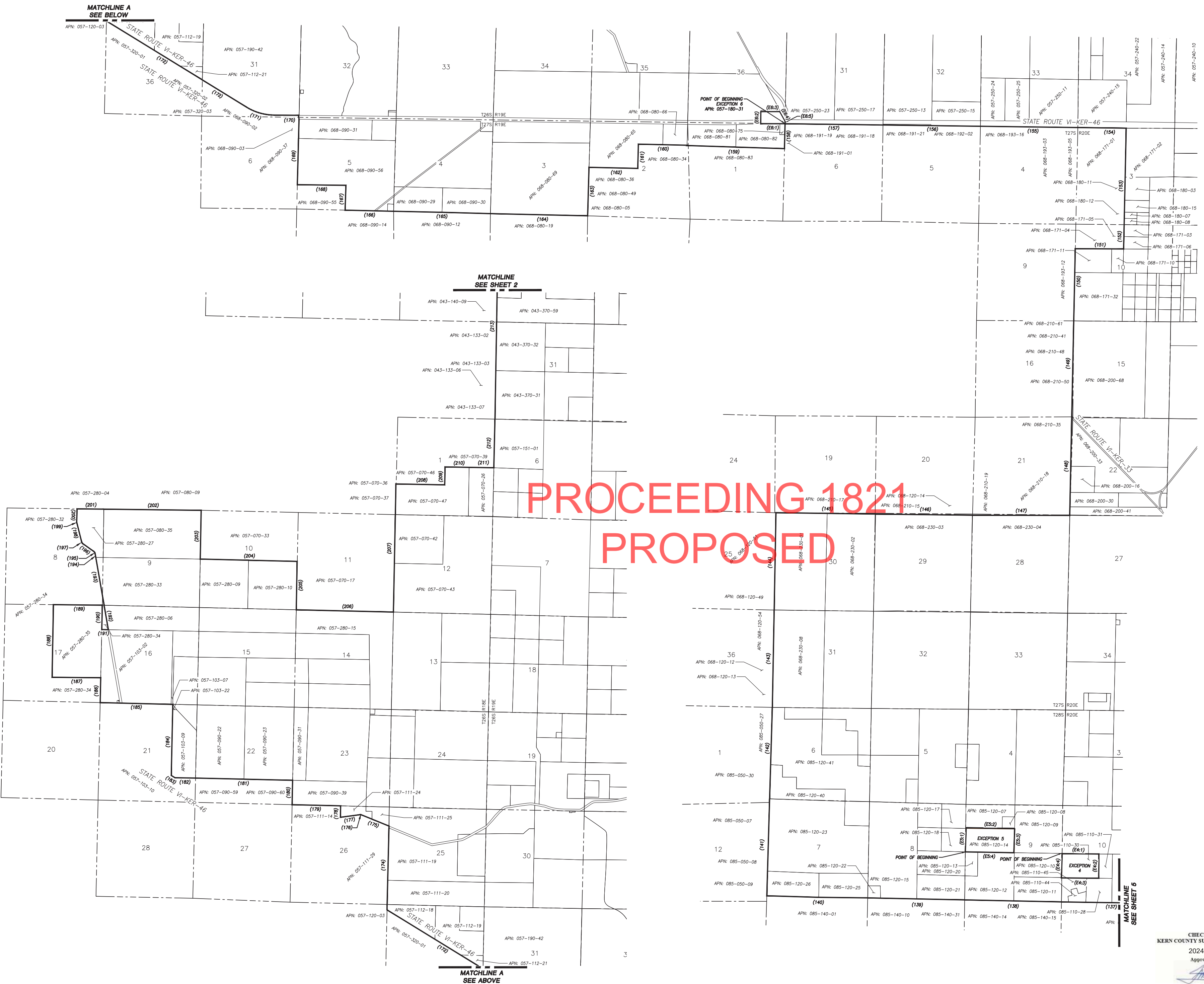
Disclaimer: For assessment purposes only. This description of land is not a legal property description as defined in the Subdivision Map Act and may not be used as the basis for an offer for sale of the land described.

PROJECT NO.: 190115
DRAWN BY: AM
DATE: 01/19/24
SCALE: AS SHOWN
SHEET NO.: 5 OF 6

EXHIBIT "B"
LOST HILLS COMMUNITY SERVICES DISTRICT
FORMATION - ANNEXATION NO. 00



PROCEEDING 1821
PROPOSED



LINE COURSE TABLE		
LINE #	BEARING	DISTANCE
(137)	N88°35'26"W	5276.04
(138)	N88°35'26"W	5286.60
(139)	N88°35'26"W	5278.02
(140)	N88°35'26"W	5503.08
(141)	N02°17'52"E	5283.59
(142)	N02°17'52"E	5283.59
(143)	N01°40'27"E	5306.20
(144)	N01°40'42"E	5306.08
(145)	S88°36'41"E	5434.86
(146)	S88°42'55"E	5264.25
(147)	S89°14'03"E	5309.23
(148)	N01°46'42"E	5332.79
(149)	N01°46'42"E	5283.59
(150)	N01°59'51"E	3967.62
(151)	S88°52'48"E	2641.79
(152)	N00°08'19"E	1321.09
(153)	N01°57'10"E	5257.91
(154)	N89°09'03"W	2637.63
(155)	N88°26'33"W	5307.33
(156)	N88°26'33"W	5307.33
(157)	N89°13'57"W	5356.43
(158)	S00°53'12"W	1304.91
(159)	N89°06'48"W	5283.59
(160)	N89°27'37"W	2641.84
(161)	S00°53'12"W	1320.90
(162)	N89°06'48"W	2641.79
(163)	S00°53'12"W	2641.79
(164)	N89°06'48"W	5283.59
(165)	N88°53'24"W	5336.23
(166)	N89°08'29"W	2639.12
(167)	N01°02'44"E	1331.20
(168)	N89°07'08"W	2639.86
(169)	N00°59'05"E	3709.42
(170)	N89°52'57"W	1866.25
(171)	N88°53'39"W	8908.23
(172)	N88°53'39"W	8908.23
(173)	N00°46'54"E	415.80
(174)	N00°17'19"E	4554.14
(175)	N70°53'50"W	1817.04
(177)	S80°23'59"W	838.75
(178)	N00°14'18"E	602.36
(179)	N89°37'54"W	2646.97
(180)	N00°22'06"E	1320.90
(181)	N89°37'54"W	5283.59
(182)	N89°37'54"W	1137.57
(183)	N59°24'36"W	212.14
(184)	N00°17'11"E	3855.66
(185)	N89°38'17"W	3957.67
(186)	N00°14'32"E	1351.15
(187)	S89°37'52"W	2646.44
(188)	N00°14'27"E	3955.66
(189)	N89°37'52"E	2646.94
(190)	S00°14'58"W	1326.82
(191)	S89°37'37"E	376.64
(192)	N10°49'04"W	1352.53
(193)	N10°49'08"W	2663.02
(194)	N10°49'22"W	173.84
(196)	N55°37'22"W	733.72
(198)	N15°20'22"W	1050.19
(200)	N00°41'38"E	718.84
(201)	N89°41'50"E	1451.25
(202)	N89°42'47"E	5304.65
(203)	S00°05'25"W	2648.23
(204)	S89°42'04"E	5287.55
(205)	S00°12'13"W	2651.00
(206)	S89°39'45"E	5294.19
(207)	N00°18'44"E	6982.25
(208)	S89°51'08"E	2636.15
(209)	N00°20'14"E	984.02
(210)	N89°58'37"E	1325.90
(211)	S89°54'33"E	1325.17
(212)	N00°20'13"E	2651.26
(213)	N00°08'52"E	10567.18

EXCEPTION 1		
LINE #	BEARING	DISTANCE
(E1:1)	N00°48'40"E	5287.50
(E1:2)	S89°27'07"E	2646.88
(E1:3)	S00°45'03"W	5302.62
(E1:4)	S01°18'39"W	1520.00
(E1:5)	N88°41'21"W	398.00
(E1:6)	S01°18'39"W	350.00
(E1:7)	S88°41'21"E	398.00
(E1:8)	S01°18'39"W	769.32
(E1:9)	S01°17'09"W	2638.00
(E1:10)	N89°05'46"W	2645.37
(E1:11)	N01°13'19"E	2637.79
(E1:12)	N89°06'58"W	1324.83
(E1:13)	N01°11'19"E	1318.80
(E1:14)	S89°07'41"E	1325.59
(E1:15)	N01°13'19"E	1319.08

CURVE COURSE TABLE				
CURVE #	DELTA	RADIUS	CHORD BEARING	CHORD LENGTH
(171)	21°20'11"	3002.04'	N69°33'45"W	1111.48
(176)	29°15'14"	200.29'	N84°58'04"W	101.15
(195)	44°48'00"	200.14'	N33°13'22"W	152.53
(197)	40°17'00"	200.14'	N39°28'52"W	137.83
(199)	16°02'00"	200.14'	N07°19'22"W	55.82

NOTE
SEE INDIVIDUAL SHEETS FOR FOLLOWING INFORMATION: COURSE NUMBERS, LINE TABLES, CURVE TABLES, RADIAL TABLES AND ASSESSOR PARCEL NUMBERS.
ALL BEARINGS & DISTANCES COMPILED FROM RECORD.

LEGEND

CHECKED BY
KERN COUNTY SURVEYOR'S OFFICE
2024-02-27
Approved by:

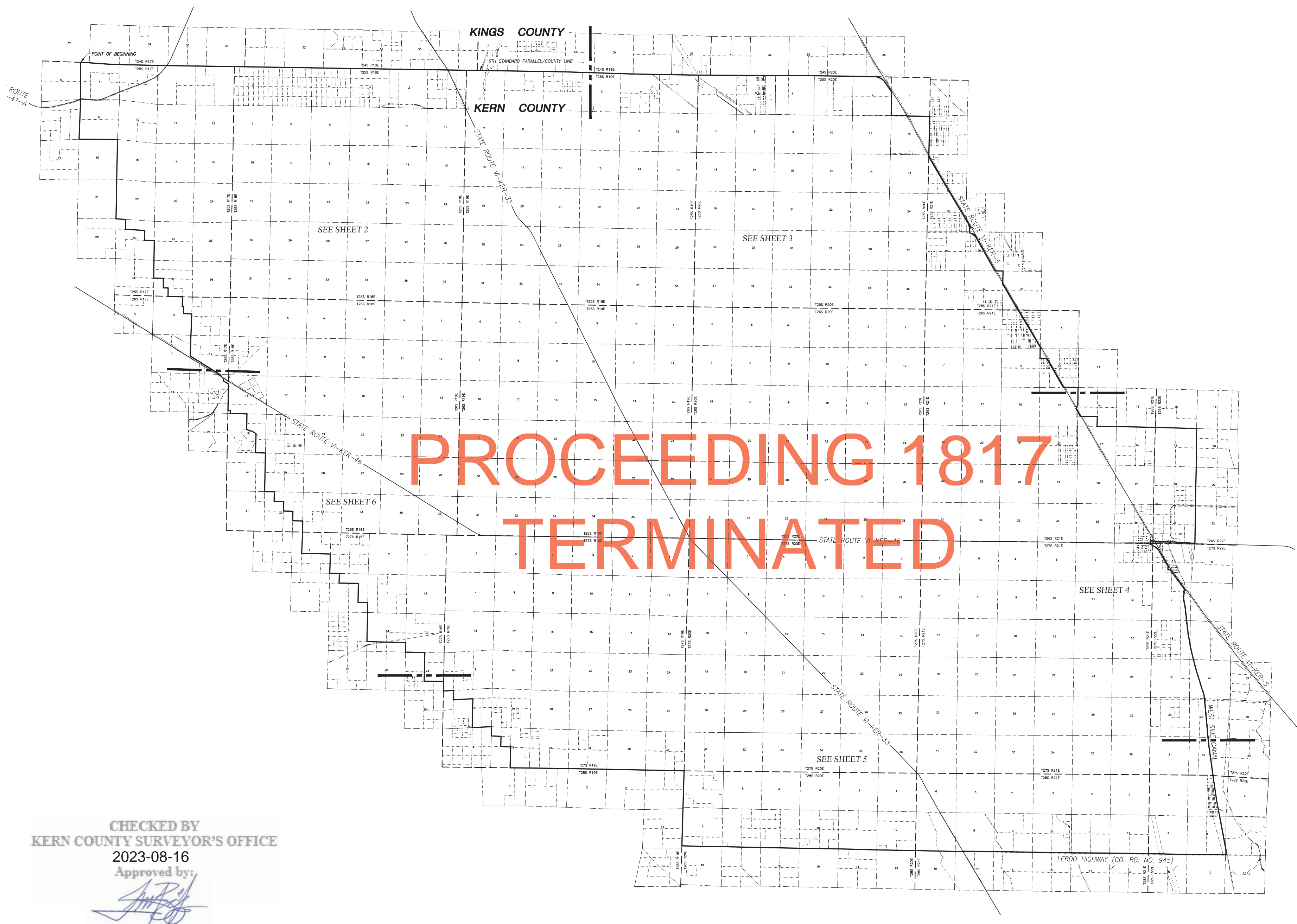
SCALE: 1" = 2000'

Disclaimer: For assessment purposes only. This description of land is not a legal property description as defined in the Subdivision Map Act and may not be used as the basis for an offer for sale of the land described.

PROJECT NO.: 190115
DRAWN BY: AM
DATE: 01/19/24
SCALE: AS SHOWN
SHEET NO.: 6 OF 6

EXHIBIT "B"
LOST HILLS COMMUNITY SERVICES DISTRICT
FORMATION - ANNEXATION NO. 00



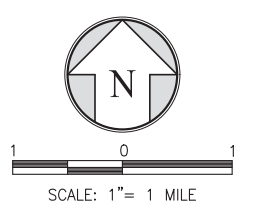


CHECKED BY
KERN COUNTY SURVEYOR'S OFFICE
 2023-08-16
 Approved by:

NOTE
 SEE INDIVIDUAL SHEETS FOR FOLLOWING INFORMATION: COURSE NUMBERS, LINE TABLES, CURVE TABLES, RADIAL TABLES AND ASSESSOR PARCEL NUMBERS.
 ALL BEARINGS & DISTANCES COMPILED FROM RECORD.

LEGEND

- PROPOSED LOST HILLS CONSOLIDATED SERVICE DISTRICT FORMATION (269.773+/- ACRES)
- - - SECTION
- - - TOWNSHIP/RANGE
- - - MATCHLINE

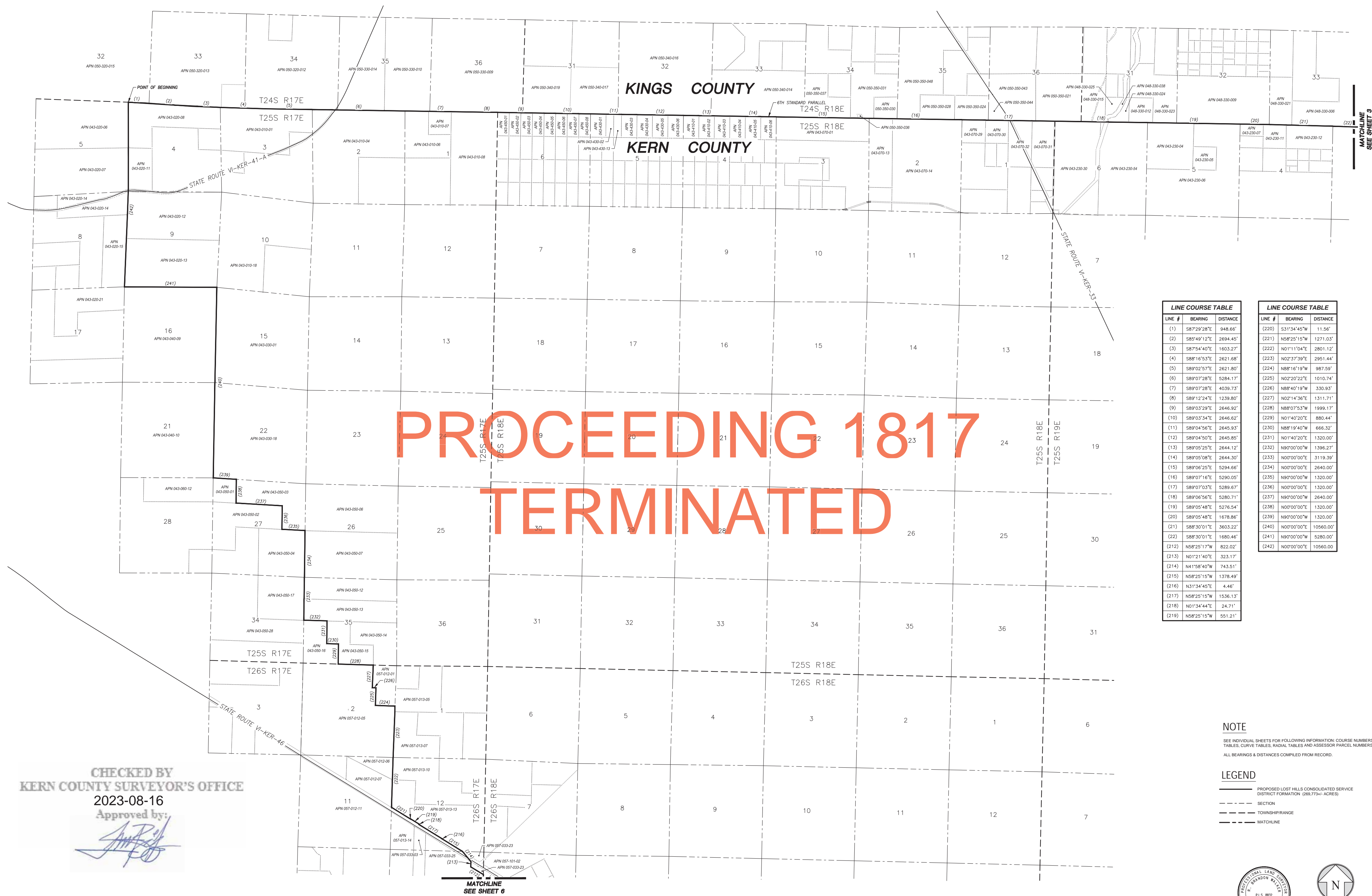


Disclaimer: For assessment purposes only. This description of land is not a legal property description as defined in the Subdivision Map Act and may not be used as the basis for an offer for sale of the land described.

PROJECT NO.: 190115
 DRAWN BY: PJK/DM
 DATE: 01/26
 SCALE: AS SHOWN
 SHEET NO.: 1 of 6

EXHIBIT "B"
 LOST HILLS COMMUNITY SERVICES DISTRICT
 FORMATION - ANNEXATION NO. 00 - OVERVIEW



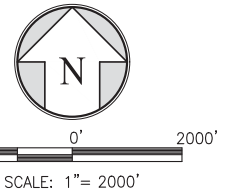


LINE #	BEARING	DISTANCE
(1)	S87°29'28"E	948.66'
(2)	S85°49'12"E	2694.45'
(3)	S87°54'40"E	1603.27'
(4)	S88°16'53"E	2621.68'
(5)	S89°02'57"E	2621.80'
(6)	S89°07'28"E	5284.17'
(7)	S89°07'28"E	4039.73'
(8)	S89°12'24"E	1239.80'
(9)	S89°03'29"E	2646.92'
(10)	S89°03'34"E	2646.62'
(11)	S89°04'56"E	2645.93'
(12)	S89°04'50"E	2645.85'
(13)	S89°05'25"E	2644.12'
(14)	S89°05'08"E	2644.30'
(15)	S89°06'25"E	5294.66'
(16)	S89°07'16"E	5290.05'
(17)	S89°07'03"E	5289.67'
(18)	S89°06'56"E	5280.71'
(19)	S89°05'48"E	5276.54'
(20)	S89°05'48"E	1678.86'
(21)	S88°30'01"E	3603.22'
(22)	S88°30'01"E	1680.46'
(212)	N58°25'17"W	822.02'
(213)	N01°21'40"E	323.17'
(214)	N41°58'40"W	743.51'
(215)	N58°25'15"W	1378.49'
(216)	N31°34'45"E	4.46'
(217)	N58°25'15"W	1536.13'
(218)	N01°34'44"E	24.71'
(219)	N58°25'15"W	551.21'

LINE #	BEARING	DISTANCE
(220)	S31°34'45"W	11.56'
(221)	N58°25'15"W	1271.03'
(222)	N01°11'04"E	2801.12'
(223)	N02°37'39"E	2951.44'
(224)	N88°16'19"W	987.59'
(225)	N02°20'22"E	1010.74'
(226)	N88°40'19"W	330.93'
(227)	N02°14'36"E	1311.71'
(228)	N88°07'53"W	1999.17'
(229)	N01°40'20"E	880.44'
(230)	N88°19'40"W	666.32'
(231)	N01°40'20"E	1320.00'
(232)	N90°00'00"W	1396.27'
(233)	N00°00'00"E	3119.39'
(234)	N00°00'00"E	2640.00'
(235)	N90°00'00"W	1320.00'
(236)	N00°00'00"E	1320.00'
(237)	N90°00'00"W	2640.00'
(238)	N00°00'00"E	1320.00'
(239)	N90°00'00"W	1320.00'
(240)	N00°00'00"E	10566.00'
(241)	N90°00'00"W	5280.00'
(242)	N00°00'00"E	10566.00'

NOTE
SEE INDIVIDUAL SHEETS FOR FOLLOWING INFORMATION: COURSE NUMBERS, LINE TABLES, CURVE TABLES, RADIAL TABLES AND ASSESSOR PARCEL NUMBERS.
ALL BEARINGS & DISTANCES COMPILED FROM RECORD.

LEGEND



CHECKED BY
KERN COUNTY SURVEYOR'S OFFICE
2023-08-16
Approved by:

Disclaimer: For assessment purposes only. This description of land is not a legal property description as defined in the Subdivision Map Act and may not be used as the basis for an offer for sale of the land described.

PROJECT NO.: 190115
DRAWN BY: PAV/AM
DATE: 01/16/23
SCALE: AS SHOWN
SHEET NO.:
2 of 6

EXHIBIT "B"
LOST HILLS COMMUNITY SERVICES DISTRICT
FORMATION - ANNEXATION NO. 00



CHECKED BY
KERN COUNTY SURVEYOR'S OFFICE

2023-08-16

Approved by:

LINE COURSE TABLE

LINE #	BEARING	DISTANCE
(21)	S88°30'01"E	3603.22'
(22)	S88°30'01"E	1680.46'
(23)	S87°52'00"E	3609.73'
(24)	S87°52'00"E	1684.41'
(25)	S89°15'32"E	3604.46'
(26)	S88°55'57"E	2650.79'
(27)	S88°55'52"E	2650.91'
(28)	S89°44'26"E	1682.46'
(29)	S89°44'46"E	3607.50'
(30)	S89°44'46"E	1820.56'
(31)	S89°49'39"E	3499.48'
(32)	S89°49'39"E	1781.84'
(33)	S89°22'57"E	3478.39'
(34)	S89°11'52"E	5283.86'
(35)	N89°38'06"E	3204.75'
(36)	S00°21'54"E	30.00'
(37)	N89°38'06"E	50.42'
(39)	S70°26'54"E	395.09'
(40)	S47°44'59"E	410.35'
(41)	S45°22'32"E	282.97'
(44)	S31°24'45"E	799.64'
(45)	S30°18'00"E	563.06'
(46)	S00°06'00"E	3171.83'
(47)	S89°13'58"E	1844.62'
(48)	S34°52'26"E	73.83'
(49)	S89°13'58"E	749.24'
(50)	S89°03'53"E	2640.93'
(51)	S01°21'56"W	5275.37'
(52)	S01°19'56"W	230.64'
(53)	S30°18'00"E	1977.17'

LINE COURSE TABLE

LINE #	BEARING	DISTANCE
(54)	S27°09'07"E	200.30'
(55)	S30°18'00"E	8185.24'
(56)	S26°00'18"E	498.40'
(58)	S00°35'56"W	759.50'
(59)	S69°00'00"E	579.68'
(61)	S32°03'00"E	785.03'
(62)	S30°18'00"E	1612.56'
(63)	S32°01'06"E	200.09'
(64)	S30°18'00"E	2943.21'
(65)	S89°25'39"E	1011.98'
(66)	S00°59'07"W	1672.63'
(67)	S30°18'00"E	10389.20'
(68)	N90°00'00"W	135.17'
(69)	S00°44'04"W	1322.19'
(70)	S89°59'59"E	924.68'
(71)	S30°18'00"E	4593.77'
(72)	S89°59'55"E	1959.17'
(73)	S00°53'44"W	1902.61'

CURVE COURSE TABLE

CURVE #	LENGTH	RADIUS	DELTA
(38)	119.93'	345.00'	19°55'00"
(42)	290.87'	1552.00'	10°44'18"
(43)	164.43'	2952.00'	3°11'29"
(57)	278.87'	594.00'	26°53'56"
(60)	383.07'	594.00'	36°57'00"

NOTE

SEE INDIVIDUAL SHEETS FOR FOLLOWING INFORMATION: COURSE NUMBERS, LINE TABLES, CURVE TABLES, RADIAL TABLES AND ASSESSOR PARCEL NUMBERS.
ALL BEARINGS & DISTANCES COMPILED FROM RECORD.

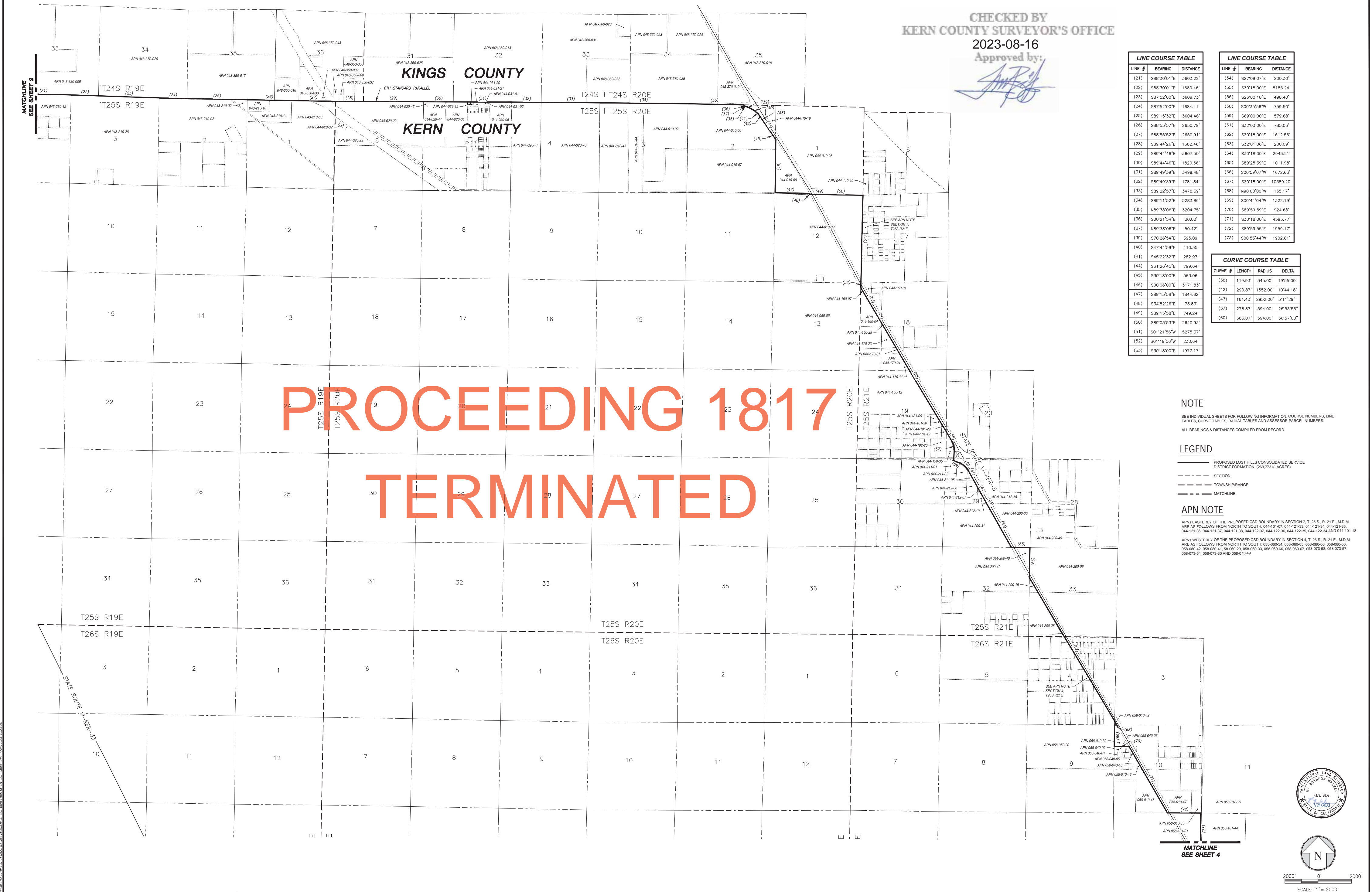
LEGEND

- PROPOSED LOST HILLS CONSOLIDATED SERVICE DISTRICT FORMATION (269,773+/- ACRES)
- - - SECTION
- - - TOWNSHIP-RANGE
- - - MATCHLINE

APN NOTE

APN EASTERLY OF THE PROPOSED CSD BOUNDARY IN SECTION 7, T. 25 S., R. 21 E., M.D.M. ARE AS FOLLOWS FROM NORTH TO SOUTH: 044-010-07, 044-121-33, 044-121-34, 044-121-35, 044-121-36, 044-121-37, 044-121-38, 044-121-39, 044-122-37, 044-122-38, 044-122-39, 044-122-34 AND 044-101-18
APN WESTERLY OF THE PROPOSED CSD BOUNDARY IN SECTION 4, T. 26 S., R. 21 E., M.D.M. ARE AS FOLLOWS FROM NORTH TO SOUTH: 058-060-54, 058-060-55, 058-060-56, 058-060-57, 058-060-58, 058-060-59, 058-060-60, 058-060-61, 058-060-62, 058-060-63, 058-060-64, 058-060-65, 058-060-66, 058-060-67, 058-060-68, 058-060-69, 058-060-70, 058-060-71, 058-060-72, 058-060-73, 058-060-74, 058-060-75, 058-060-76, 058-060-77, 058-060-78, 058-060-79 AND 058-060-80

PROCEEDING 1817
TERMINATED



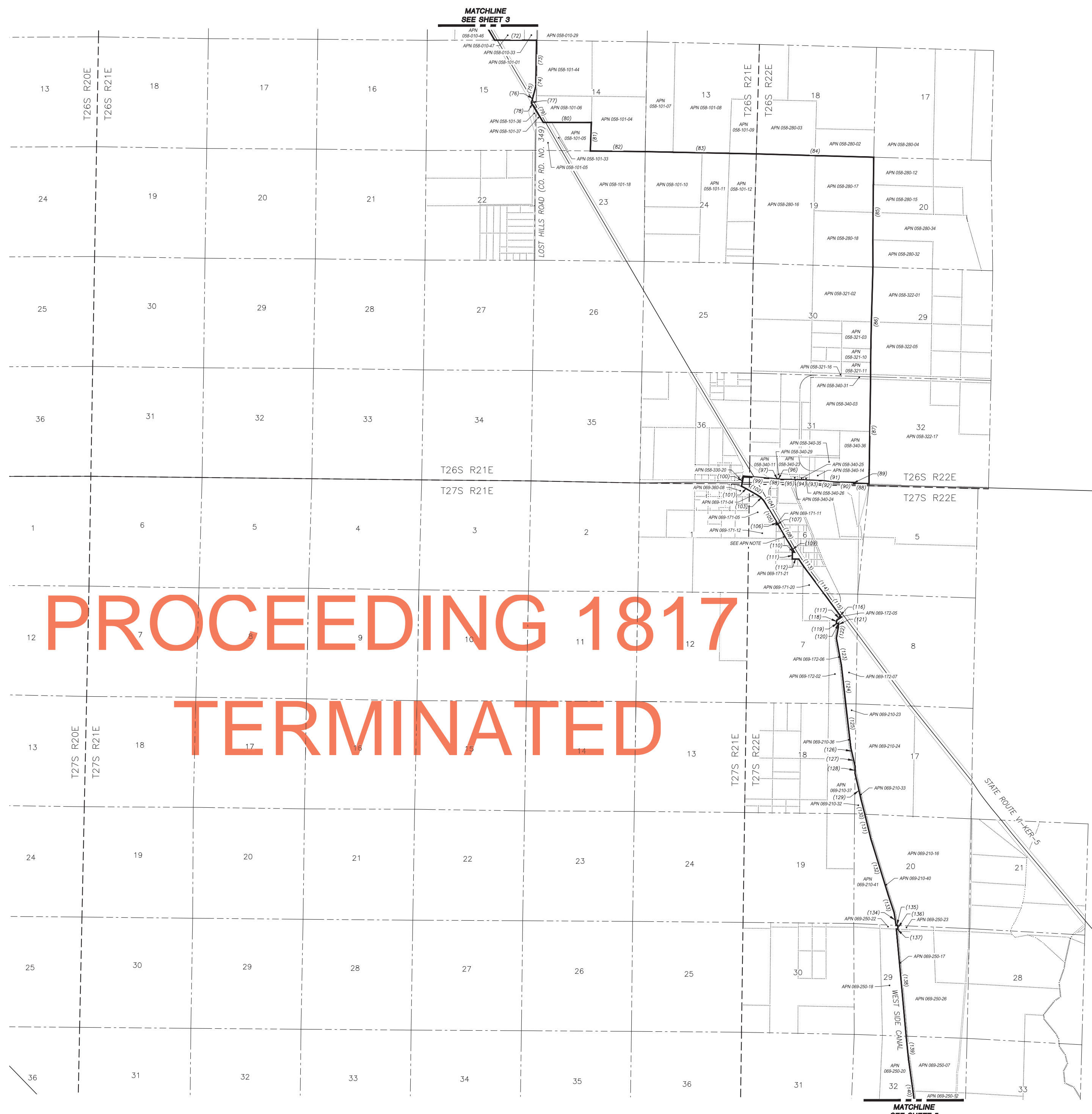
2000' 0' 2000'
SCALE: 1" = 2000'

Disclaimer: For assessment purposes only. This description of land is not a legal property description as defined in the Subdivision Map Act and may not be used as the basis for an offer for sale of the land described.

PROJECT NO.: 190115
DRAWN BY: PFM/AM
DATE: 08/16/23
SCALE: AS SHOWN
SHEET NO.: 3 of 6

EXHIBIT "B"
LOST HILLS COMMUNITY SERVICES DISTRICT
FORMATION - ANNEXATION NO. 00





LINE COURSE TABLE			LINE COURSE TABLE		
LINE #	BEARING	DISTANCE	LINE #	BEARING	DISTANCE
(72)	S89°59'55"E	1959.17'	(115)	S36°43'27"E	700.02'
(73)	S00°53'44"W	1902.61'	(116)	S37°08'00"E	299.99'
(74)	S00°53'44"W	186.51'	(117)	S52°52'00"W	265.00'
(75)	S13°46'50"W	568.41'	(118)	S05°06'51"W	152.53'
(76)	S16°01'58"W	304.14'	(119)	S81°22'00"E	60.00'
(77)	S17°25'49"E	125.58'	(120)	N43°07'38"E	96.68'
(78)	S70°18'00"E	39.56'	(121)	S02°02'00"W	39.52'
(79)	S30°18'00"E	1053.20'	(122)	S06°16'00"W	699.40'
(80)	S89°16'59"E	2255.47'	(123)	S10°16'00"E	1541.80'
(81)	S00°55'44"W	1320.64'	(124)	S06°37'00"E	1645.30'
(82)	S89°20'29"E	2637.65'	(125)	S07°13'01"E	1902.47'
(83)	S88°49'17"E	5342.58'	(126)	S09°55'01"E	434.76'
(84)	S88°22'38"E	5649.38'	(127)	S14°15'01"E	564.47'
(85)	S00°25'47"W	5280.13'	(128)	S00°01'00"E	305.03'
(86)	S01°12'19"W	5281.14'	(129)	S14°15'01"E	1857.49'
(87)	S00°53'09"W	5146.82'	(130)	S07°54'01"E	346.93'
(88)	N88°26'01"W	732.77'	(131)	S14°44'07"E	1186.60'
(89)	N01°36'09"E	37.26'	(132)	S18°08'13"E	2780.89'
(90)	N87°55'48"W	772.62'	(133)	S19°17'07"E	947.74'
(91)	N86°57'26"W	275.23'	(134)	S09°10'34"E	594.29'
(92)	N83°33'50"W	452.55'	(135)	S87°41'30"E	76.53'
(93)	N87°36'47"W	901.01'	(136)	S05°58'00"E	151.58'
(94)	N88°59'21"W	225.01'	(137)	N87°41'30"W	75.79'
(95)	N88°36'18"W	924.62'	(138)	S05°58'00"E	5190.54'
(96)	N78°33'05"W	149.52'	(139)	S05°58'00"E	1075.47'
(97)	S00°59'11"W	14.13'	(140)	S08°49'00"E	4242.43'
(98)	N83°33'34"W	195.40'			
(99)	N84°36'16"W	1423.64'			
(100)	S10°16'37"W	515.39'			
(101)	S62°12'24"E	497.87'			
(102)	S60°20'43"E	397.14'			
(103)	S30°50'54"E	399.70'			
(104)	S30°18'00"E	738.07'			
(105)	S00°54'27"W	147.86'			
(106)	S89°18'10"E	89.37'			
(107)	S30°18'00"E	1235.14'			
(108)	S89°17'23"W	98.70'			
(109)	S00°52'51"W	330.08'			
(110)	S89°16'44"E	314.52'			
(111)	S37°08'00"E	1534.61'			

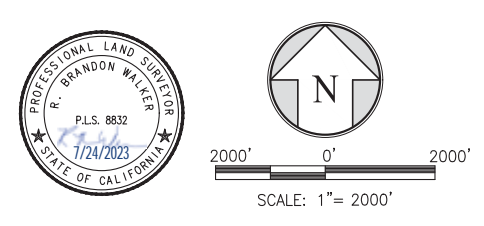
CURVE COURSE TABLE			
CURVE #	LENGTH	RADIUS	DELTA
(103)	423.56'	944.00'	25°42'29"
(109)	307.17'	1413.00'	1°14'44"
(113)	984.14'	1413.00'	3°59'28"

CHECKED BY
KERN COUNTY SURVEYOR'S OFFICE
2023-08-16
 Approved by:


NOTE
 SEE INDIVIDUAL SHEETS FOR FOLLOWING INFORMATION: COURSE NUMBERS, LINE TABLES, CURVE TABLES, RADIAL TABLES AND ASSESSOR PARCEL NUMBERS. ALL BEARINGS & DISTANCES COMPILED FROM RECORD.

LEGEND
 - - - - - PROPOSED LOST HILLS CONSOLIDATED SERVICE DISTRICT FORMATION (269.773± ACRES)
 - - - - - SECTION
 - - - - - TOWNSHIP/RANGE
 - - - - - MATCHLINE

APN NOTE
 APN WESTERLY OF THE PROPOSED CSD BOUNDARY IN SECTION 6, T. 27 S., R. 22 E., M.D.M. AREA AS FOLLOWS FROM NORTH TO SOUTH: 069-180-01, 069-180-02, 069-180-03, 069-180-04, 069-180-17, 069-180-18 AND 069-180-61

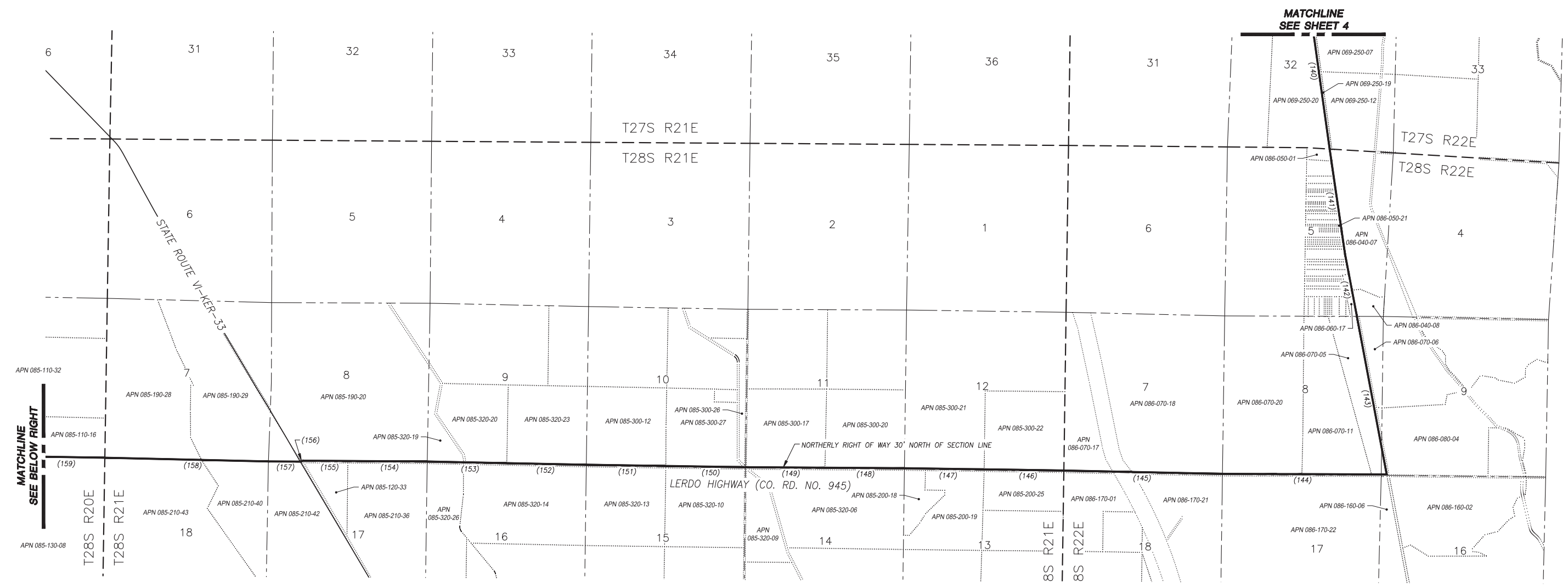


Disclaimer: For assessment purposes only. This description of land is not a legal property description as defined in the Subdivision Map Act and may not be used as the basis for an offer for sale of the land described.

PROJECT NO.: 180115
 DRAWN BY: PAV/AM
 DATE: 08/16/23
 SCALE: AS SHOWN
 SHEET NO.: 4 of 6

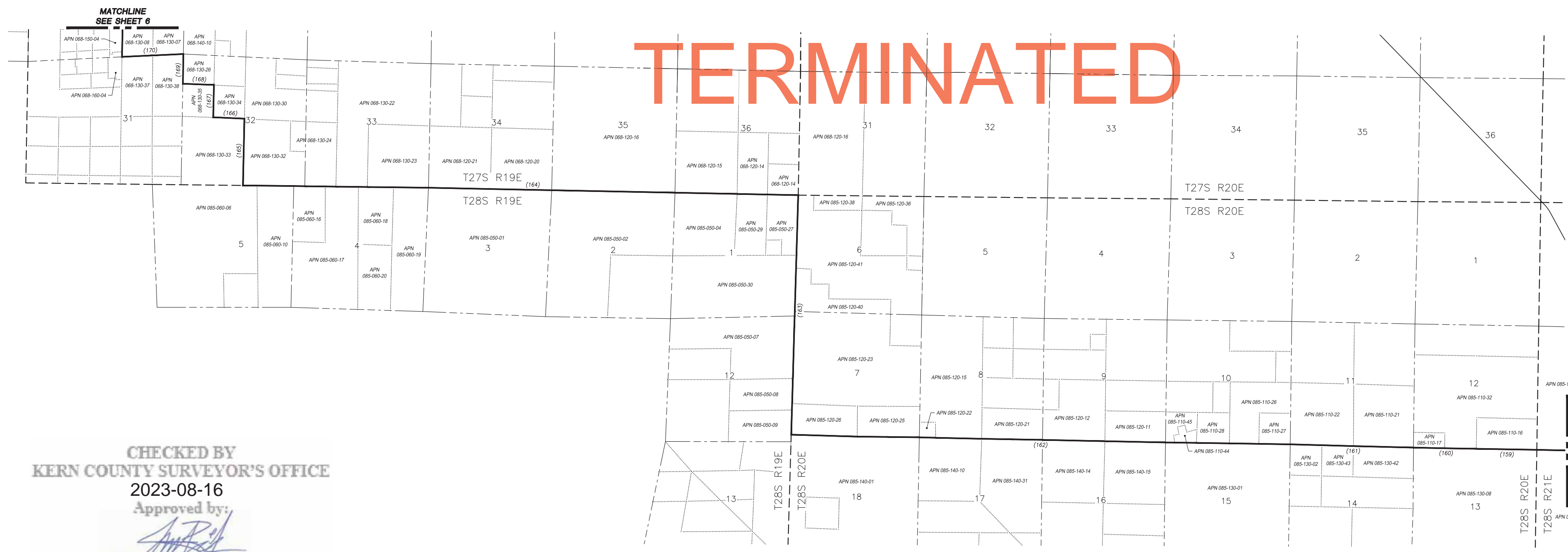
EXHIBIT "B"
LOST HILLS COMMUNITY SERVICES DISTRICT
FORMATION - ANNEXATION NO. 00





LINE #	BEARING	DISTANCE
(140)	S08°49'00"E	4242.43'
(141)	S08°47'10"E	3499.74'
(142)	S11°38'10"E	2127.24'
(143)	S11°38'00"E	5339.64'
(144)	N89°48'09"W	5193.22'
(145)	N89°49'11"W	5268.76'
(146)	N89°10'47"W	2648.72'
(147)	N89°10'38"W	2649.22'
(148)	N89°37'24"W	2641.69'
(149)	N89°37'06"W	2641.30'
(150)	N89°08'23"W	2644.06'
(151)	N89°08'29"W	2643.91'
(152)	N88°49'17"W	2642.95'
(153)	N88°49'13"W	2643.20'
(154)	N89°38'50"W	2638.34'
(155)	N89°41'01"W	1604.28'
(156)	S60°19'17"W	60.01'
(157)	N89°41'01"W	982.10'
(158)	N88°40'33"W	5435.58'
(159)	N89°58'41"W	2644.99'
(160)	N89°00'55"W	2647.91'
(161)	N88°28'33"W	5279.87'
(162)	N90°00'00"W	21343.74'
(163)	N00°00'00"E	10560.00'
(164)	N90°00'00"W	23760.00'
(165)	N00°00'00"E	2640.00'
(166)	N90°00'00"W	1320.00'
(167)	N00°00'00"E	1320.00'
(168)	N90°00'00"W	1320.00'
(169)	N00°00'00"E	1320.00'
(170)	N90°00'00"W	2640.00'

PROCEEDING 1817 TERMINATED

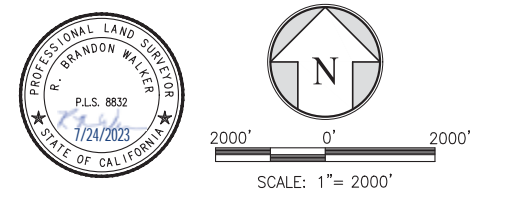


NOTE
SEE INDIVIDUAL SHEETS FOR FOLLOWING INFORMATION: COURSE NUMBERS, LINE TABLES, CURVE TABLES, RADIAL TABLES AND ASSESSOR PARCEL NUMBERS.
ALL BEARINGS & DISTANCES COMPILED FROM RECORD.

LEGEND

- PROPOSED LOST HILLS CONSOLIDATED SERVICE DISTRICT FORMATION (269.773+/- ACRES)
- - - SECTION
- - - - - TOWNSHIP/RANGE
- - - - - MATCHLINE

CHECKED BY
KERN COUNTY SURVEYOR'S OFFICE
2023-08-16
Approved by:



Disclaimer: For assessment purposes only. This description of land is not a legal property description as defined in the Subdivision Map Act and may not be used as the basis for an offer for sale of the land described.



